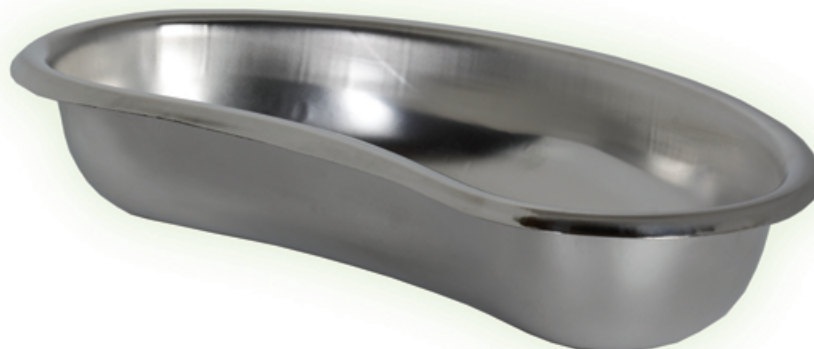


## HOSPITAL WARES

### KIDNEY TRAYS

| CODE   | SIZE LxWxH    |
|--------|---------------|
| LC-051 | 150x80x30 mm  |
| LC-052 | 200x100x40 mm |
| LC-053 | 250x120x45 mm |
| LC-054 | 300x150x60 mm |



### KIDNEY TRAY WITH LID



| CODE   | SIZE LxWxH    |
|--------|---------------|
| LC-055 | 150x80x30 mm  |
| LC-056 | 200x100x40 mm |
| LC-057 | 250x120x45 mm |
| LC-058 | 300x150x60 mm |